

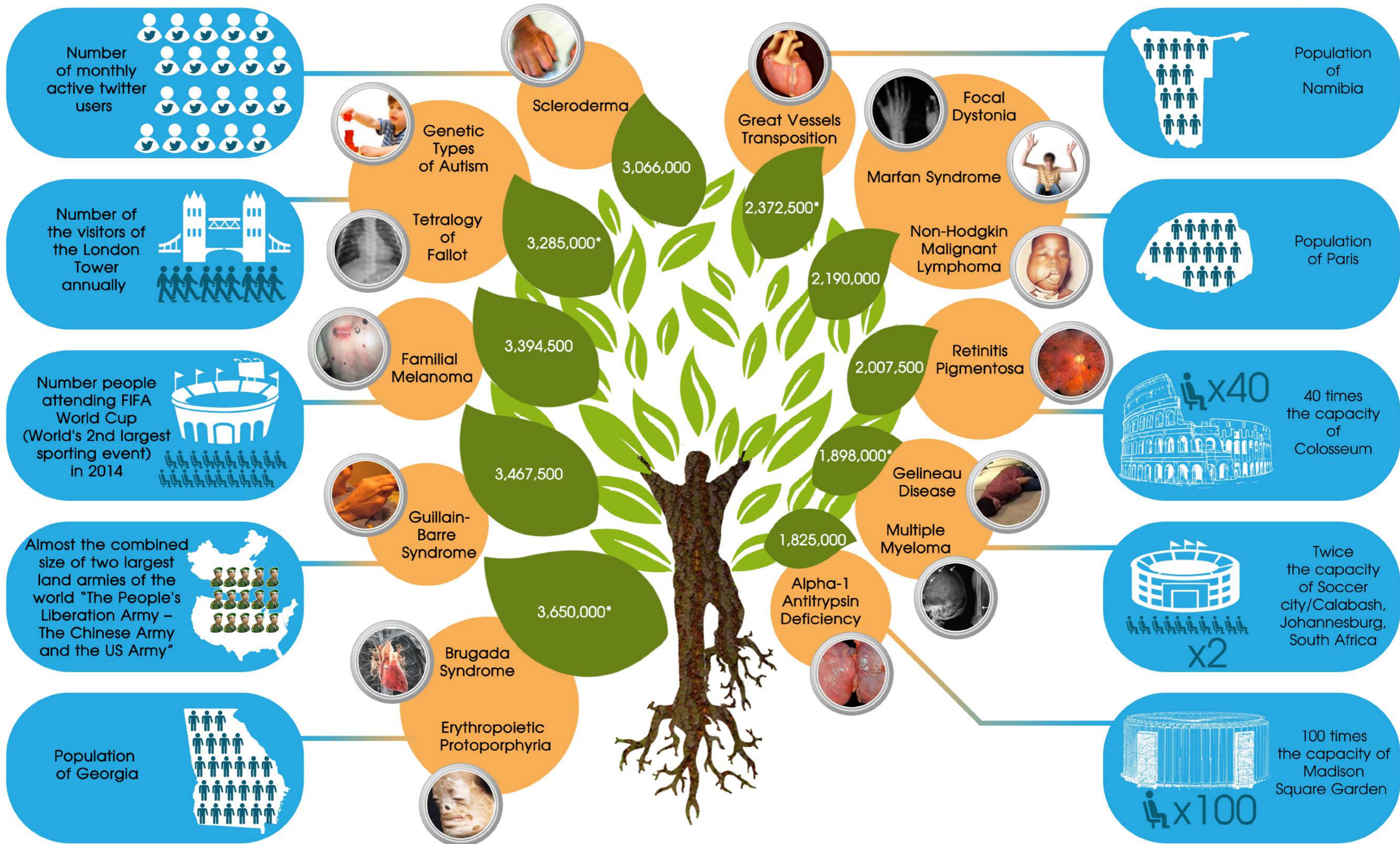
# INTERNATIONAL RARE DISEASES DAY 2016

## How rare are Rare Diseases?

According to the EURORDIS, a disease with a prevalence of no more than five in 10,000 people is defined as rare. Over 7000 rare diseases are known at the moment, and new types of maladies are still being discovered. The cause for around 80% of rare diseases is genetic whilst infections, allergies and other defects contribute to the rest.

Even though rare diseases are called "rare" for a reason, some of them affect hundreds of thousands of people. Globally, more than 300 million individuals suffer from a rare disease. This makes it skeptical to state if rare diseases are in fact rare and poses a question "How rare are rare disease?"

In anticipation to answer the question and aspiring to raise awareness on this issue, FSRC estimated the fraction of people with the most common rare diseases worldwide from the estimated prevalence in Europe.



### References:

- <http://www.eurordis.org/about-rare-diseases>
- <https://globalgenes.org/rare-diseases-facts-statistics/>
- <https://www.novartis.com/stories/medicines/rare-diseases-more-common-you-think>
- <http://www.rarediseaseday.org/article/what-is-a-rare-disease>
- [http://www.orpha.net/orphacom/cahiers/docs/GB/Prevalence\\_of\\_rare\\_diseases\\_by\\_alphabetical\\_list.pdf](http://www.orpha.net/orphacom/cahiers/docs/GB/Prevalence_of_rare_diseases_by_alphabetical_list.pdf)

- [http://ec.europa.eu/health/ph\\_threats/non\\_com/docs/rdnumbers.pdf](http://ec.europa.eu/health/ph_threats/non_com/docs/rdnumbers.pdf)
- <http://census.gov/>
- <http://www.worldheritagesite.org/tags/tag352.html>
- <http://www.statista.com/statistics/282087/number-of-monthly-active-twitter-users/>
- Population of countries and capacity of stadiums: Data derived from <https://en.wikipedia.org/>

Note: The prevalence numbers behind the diseases are estimates per 100,000 in Europe. This was applied to the estimated population in the world (7,300,000,000) as of 25th of February 2016 based on United States Census Bureau, in order to assess the global prevalence for that particular disease.

- Gaya has to give text
- \* Gaya has to give text